

UNLOCK YOUR CROP'S GENETIC POTENTIAL
SYNERGISING BIOLOGY TO MULTIPLY PROFIT

Gourmet Tomatoes

Sabel-X Hort - 1 application

Driver of return on income of 109 to 1

Crop Issue: Low returns on first planting caused by perennial adverse conditions - pythium, humidity, rain

Solution: Synergistic biological program to overcome low returns on 1st planting

Focus: Parameters of larger and heavier fruit as these are directly linked to grower's income

Result:

- Exceptional return of income of 109 to 1 (extra \$38, 640/ha)
- Sabel-X Hort - driver of increase. Worked synergistically to multiply results
- Above average harvest results reduced financial pressure on following harvests
- Even spread of moisture so swampy ridden soils had healthy crops
- Fewer plantings required in future as crops produced fruit for longer
- Larger, heavier fruit resulted in higher yields and returns

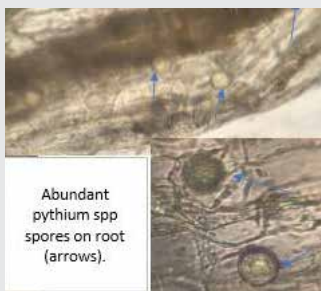
Why this extraordinary result is not a one off

Selecting the right biological products is no different to selecting the best fertiliser or pesticide combination to meet your crop's needs. When biological products are methodically selected to work synergistically to overcome specific crop constraints, results typically multiply farmer's return on investment. This result is an example of this.

Products chosen - each are individually effective, but combined work synergistically to multiply results

- **Sabel-X Hort** - one application next generation encapsulated Endophytic Trichoderma that switch on positive gene pathways the crop needs to overcome growth constraints.
- **Fix & Release** - even spread of moisture. In this study moisture was evenly spread over hilly and swamp ridden sections which surprised with healthy crops.
- **Batallon** - dramatically improves soil fertility. Will increase size and yield when applied at critical times.
- **Bombardier** - crop stress mitigator at all crop stages.
- **Mycogel** - high concentration of unique active Mycorrhizae in liquid formulation to immediately improve root health.

Disease Pathogen Analysis Feb just before 1st harvest (15/4/20)



Standard - pythium severity score - high.
Typical result at start of season.



Sabel-X + Mycogel - white healthy roots with zero pathogens

Sabel-X and Mycogel combined synergistically to create a healthy root system to boost growth.

UNLOCK YOUR CROP'S GENETIC POTENTIAL



Standard



Mycogel



Sabel-X Hort



Sabel-X + Mycogel

GOURMET TOMATO IMPROVEMENT SFS TRIAL BUNDBERG 2020

(measured harvest figures expressed as kilograms per 11 plants/week)

Product	Week 1 18/04/2020		Week 2 25/04/2020		Week 3 1/05/2020		Week 4 8/05/2020		Week 5 15/05/2020		Week 6 22/05/2020		Week 7 29/05/2020		Week 8 5/06/2020		Week 9 12/06/2020		Week 10 19/06/2020		AGGREGATED WEIGHTS & COMMENTS	
	weight	numbers	weight	numbers	weight	numbers	weight	numbers	weight	numbers	weight	numbers	weight	numbers	weight	numbers	weight	numbers	weight	numbers		
Standard	0.87	5 fruit	4.67	29 fruit	14.7	91 fruit	11.4	71 fruit	8.1	59 fruit	6.0	39 fruit	3.3	23 fruit	8.8	66 fruit	5.0	41 fruit	2.7	19 fruit	65.54	443 fruit / Avg. 147.95gms
SabelX	1.17	8 fruit	5.02	27 fruit	12.7	74 fruit	14.1	85 fruit	14.6	88 fruit	11.4	71 fruit	6.0	33 fruit	9.3	56 fruit	12.5	89 fruit	10.3	80 fruit	97.09	611 fruit / Avg. 158.90gms
Mycogel	0.24	2 fruit	5.8	40 fruit	11.1	68 fruit	12.5	76 fruit	12.4	83 fruit	5.9	47 fruit	4.8	37 fruit	7.5	60 fruit	7.0	59 fruit	7.2	61 fruit	74.44	533 fruit / Avg. 139.66gms
Mycogel + SabelX	0.45	3 fruit	4.82	26 fruit	15.3	88 fruit	16.5	92 fruit	13.0	74 fruit	12.5	74 fruit	10.2	66 fruit	10.1	63 fruit	11.3	80 fruit	8.8	69 fruit	102.97	635 fruit / Avg. 162.16gms
* Notes taken*	Both Myco treated blocks are visually behind others		All blocks, espec Myco ones have exploded		Standard block looks to have peaked		Last wk was true (Std & Myco blocks) peaked. SabelX inc blocks increase		Std block decreasing quickly in size & numbers. SabelX ones		Mycogel block big drop (1/2 last wk). SabelX ones strong		Most blocks 1/2 other than Myco+SabelX		Better temp for week increased maturity. Myco+SabelX still strong		SabelX treated still standouts (double the standard)		Ethrel applic 13/6. Std finished		Sabel-X Hort is biggest driver in yield increase; 48.1% above standard; 57.1% with Mycogel.	

Treatment	yield t/ha	Yield Increase above 60t/ha	% yield increase above standard	% fruit increase above standard	ROI increase /ha above standard
Standard - crop stress program	77.4 t/ha	29%	-	-	-
Mycogel	82.9 t/ha	38.2%	7%	7%	\$5,427/ha
Sabel-X Hort	107 t/ha	78.3%	38.1%	25.2%	\$29,538/ha
Sabel-X Hort + Mycogel	116.1 t/ha	93.5%	49.8%	33.5%	\$38,640/ha

Summary Results

ROI :

Sabel-X Hort + Mycogel 67.4 : 1 = \$38,640/ha with \$685/ha input cost

Sabel-X Hort 109 : 1 = \$29, 538/ha with \$160/ha input cost

Mycogel 10 : 1 = \$5,426/ha with \$330/ha input cost

Yield Increase:

Mycogel + Sabel-X Hort 49.8% yield increase (33.5% more fruit & 12.3% higher weight)

Sabel-X - Hort 48.1% yield increase (25.2% more fruit & 10.3% higher weight)

Mycogel 7.0% yield increase (11.3% more fruit)

All treatments were > 60 tonnes per hectare using SFS products designed to overcome biotic and abiotic stresses typical of February plantings in QLD.

Sabel-X Hort was the driver that took yields to well above average. During stress, Sabel-X Hort treatments had less crop death with plants overcoming stress from Pythium and extreme weather with greater fruit load. The synergistic effects of Mycogel, Batallon, Bombardier and Fix & Release has contributed to the extraordinary impact of Sabel-X Hort.

18/06/20