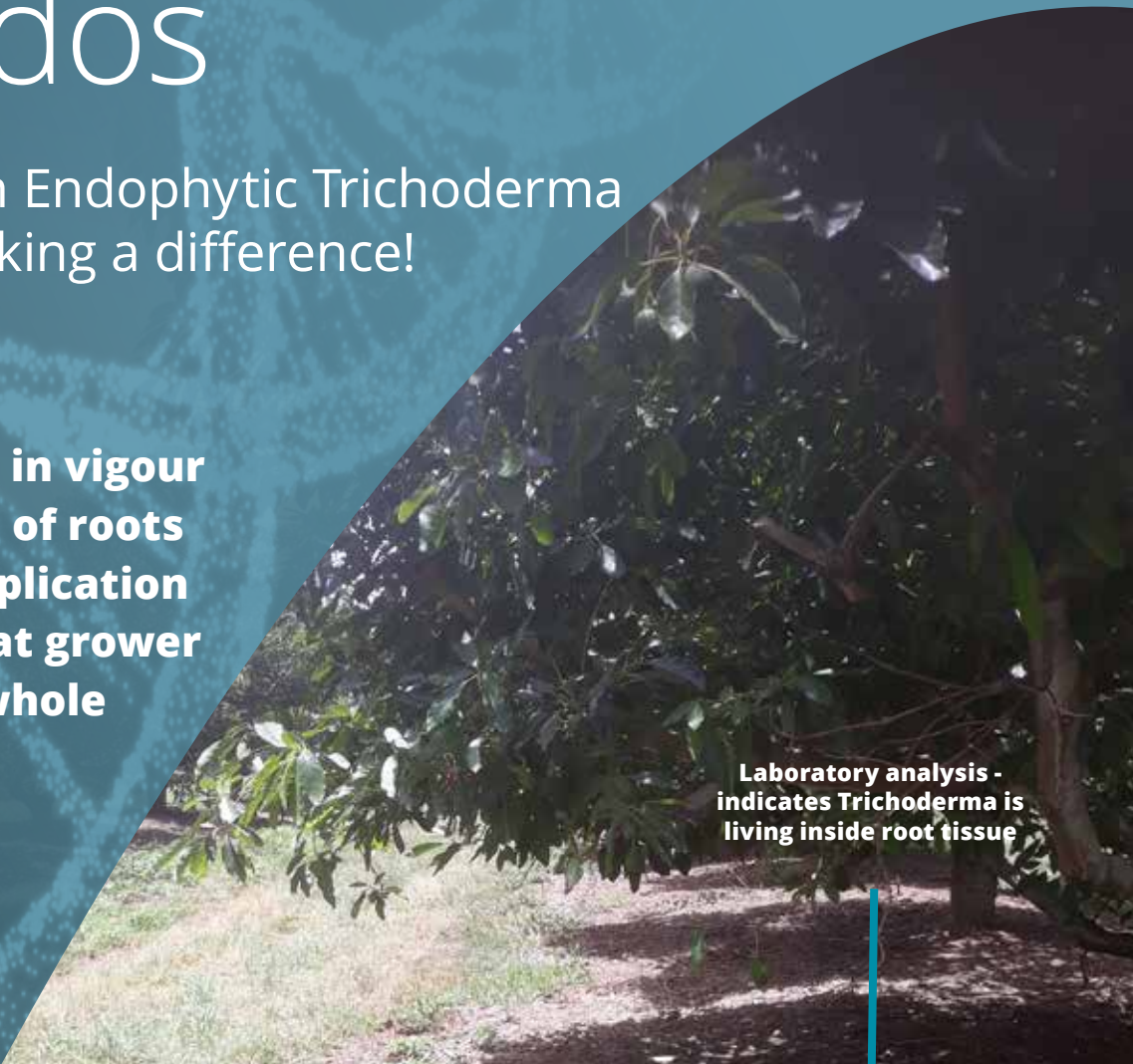


# Avocados

Next generation Endophytic Trichoderma consistently making a difference!

“

**Visual difference in vigour and proliferation of roots 1 month after application so impressive that grower then applied to whole orchard!**



Laboratory analysis - indicates Trichoderma is living inside root tissue

## Sabel-X Endophytic Trichoderma

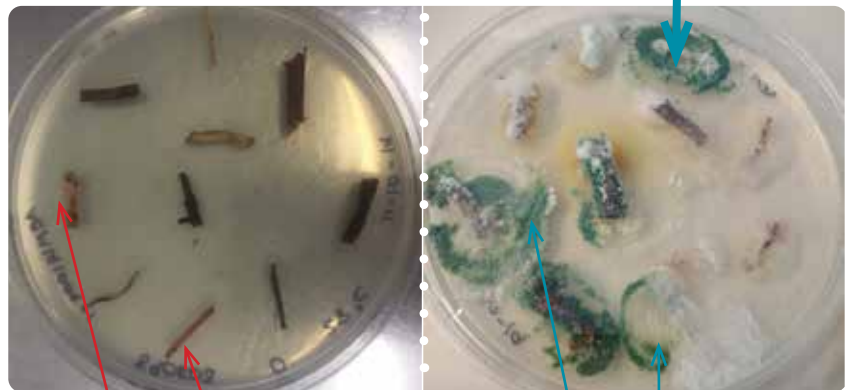
### Laboratory Analysis

Post application, Trichoderma consistently live inside plant tissue.

### In the Field

Exceptional grower feedback showing consistent improvements. Typically growers use once, see the difference and use on entire crop!

- Immediate action
- Typically 1 application
- Robust microbe
- Not affected by fungicides
- 30+ years in the making



Untreated showing no Trichoderma inside root tissue

Sabel-X Treatment - Green indicates trichoderma is alive inside root tissue

UNLOCK YOUR CROP'S GENETIC POTENTIAL

How Sabel-X Trichoderma work:

Immediately enter the plant

Once inside, produce metabolites that influence the whole plant (by switching on gene pathways) resulting in a positive effect on:

- |                            |                          |
|----------------------------|--------------------------|
| <b>Germination</b>         | <b>Growth and vigour</b> |
| <b>Photosynthesis</b>      | <b>Root development</b>  |
| <b>Disease resistance</b>  | <b>Stress resistance</b> |
| <b>Yield &amp; Quality</b> | <b>Water utilisation</b> |

Rates

Crop	Dosage	Comment
<b>Tree crops &amp; Vines</b>	<b>At planting:</b> 0.5g/tree	Dissolve in 15L non-chlorinated water. Apply as a root drench or via the irrigation system.
(Via Irrigation)	<b>&lt; 3 years</b> 1st root flush: 1.5 - 2.0g/tree/vine 2nd root flush: 1.0 - 1.5g/tree/vine	For seedlings, apply at planting. For mature trees, start at first seasonal root flush; repeat in autumn root flush.
	<b>&gt; 4 years</b> 1st root flush: 2.0 - 2.5g/tree/vine 2nd root flush: 1.0 - 1.5g/tree/vine	If further information required contract your local SFS representative.



Trees replanted in mature avocado orchard - Sabel-X used to improve growth of problem replants.

Pre-treatment the replant had poor growth. Sabel-X was applied as a drench at 4g per tree (in 2L water).

8 weeks later tree has grown to the size of the other trees planted.

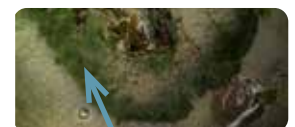
Green indicates Trichoderma is living inside the roots of treated avocado trees.



Progress from photo 1 to 3 in less than 2 months

Background:

- Phytophthora infection in Sheppard Avocados had started around 2yrs age, when there was a "big rainfall event", March 2017
- Trees had not done well since then. Standard industry programs were used for Phytophthora but trees could not sustain vegetative growth.
- After the 1st application of Sabel-X there was a regeneration of vegetative growth in the affected trees, which has continued. In less than 6wks, the affected trees all had regrown significant leaf and new branches, and have retained them. At time of printing, the trees are retaining fruit and are now at the fruit fill stage.



Green indicates Sabel-X Trichoderma is living inside the roots of treated avocado trees